

# *TRBO*net

## Bluetooth-based Indoor Positioning Configuration Guide

Version 5.1

### World HQ

Neocom Software  
8th Line 29, Vasilyevsky Island  
St. Petersburg, 199004, Russia

### US Office

Neocom Software  
15200 Jog Road, Suite 202  
Delray Beach, FL 33446, USA

### Internet

Email: [info@trbonet.com](mailto:info@trbonet.com)  
[WWW.TRBONET.COM](http://WWW.TRBONET.COM)

### Telephone

EMEA: +44 203 608 0598  
Americas: +1 872 222 8726  
APAC: +61 28 6078325



## Legal Notices

This document is for informational purposes only. Neocom Software, Ltd offers no warranties, express or implied, in this document.

Neocom and the Neocom logo, TRBOnet and the TRBOnet logo are either registered trademarks or trademarks of Neocom Software, Ltd.

MOTOROLA, MOTO, MOTOROLA SOLUTIONS and the Stylized M logo are trademarks or registered trademarks of Motorola Trademark Holdings, LLC.

Microsoft, Windows, SQL Server and the .NET logo are either registered trademarks or trademarks of Microsoft Corporation in the United States and/or other jurisdictions.

Other product or company names mentioned herein may be trademarks of their respective owners.

© 2016 by Neocom Software, Ltd. All rights reserved.

Last revised on 25 November 2016.

---

## Contents

1.	Introduction.....	1
1.1.	About This Guide.....	1
1.2.	About TRBOnet.....	1
1.3.	Contacts .....	1
2.	Overview.....	2
2.1.	TRBOnet Indoor Positioning .....	2
2.2.	Supported Transmitters.....	2
2.3.	Functional Architecture .....	2
2.4.	Features .....	3
2.5.	Hardware and Software Requirements.....	5
2.6.	Recommendations on iBeacon Transmitters.....	5
2.7.	Abbreviations.....	5
3.	Configuration .....	7
3.1.	Radio Configuration.....	7
3.2.	Server Configuration.....	10
3.2.1.	Applying a License with Indoor Positioning Support.....	10
3.2.2.	Verifying the GPS Location Service.....	11
3.3.	Dispatch Console Configuration .....	13
3.3.1.	Creating a GPS Profile .....	13
3.3.2.	Assigning a GPS Profile to Radios .....	16
3.3.3.	Preparing a Floor Map.....	17
3.3.4.	Placing Beacons on a Map.....	17
3.4.	Test.....	20

# 1. Introduction

## 1.1. About This Guide

This document is intended for administrators setting up evaluation and proof-of-concept deployments of MOTOTRBO Dispatch over IP solutions. The document describes the minimum steps to configure the Bluetooth-based Indoor Positioning functionality of TRBOnet.

For more comprehensive information on the Neocom TRBOnet family of radio network software tools, refer to our website.

## 1.2. About TRBOnet

TRBOnet is a suite of professional applications for the MOTOTRBO digital two-way radio networks. TRBOnet manages voice, text and data communication paths to network endpoints and provides a unified graphical dispatcher workbench interface for all the messaging and workforce orchestration tasks.

## 1.3. Contacts

Region	Phone	Email & Support
EMEA	+44 203 608 0598	<a href="mailto:info@trbonet.com">info@trbonet.com</a> – general and commercial inquiries
Americas	+1 872 22 28 726	<a href="mailto:support@trbonet.com">support@trbonet.com</a> – technical support
APAC	+61 28 6078325	<a href="http://kb.trbonet.com">http://kb.trbonet.com</a> – online knowledge base

## 2. Overview

### 2.1. TRBOnet Indoor Positioning

Indoor Positioning is a TRBOnet functionality that allows a TRBOnet Dispatch Console operator to trace indoor location of a MOTOTRBO two-way radio in real time. TRBOnet identifies the location of a radio by constantly receiving information about the radio's proximity to the closest hardware transmitter (beacon) installed in the monitored area.

### 2.2. Supported Transmitters

TRBOnet Indoor Positioning works with new-generation Bluetooth LE (Low Energy) transmitters based on Apple's iBeacon technology.

Note: Though K-term beacon transmitters by Kilchherr Elektronik are not in the scope of this document, they are supported. Documents discussing TRBOnet Indoor Positioning with K-term beacon transmitters can be provided by request.

### 2.3. Functional Architecture

The key components of a TRBOnet Bluetooth-based Indoor Positioning solution are iBeacon transmitters, preconfigured MOTOTRBO two-way radios, and TRBOnet software.

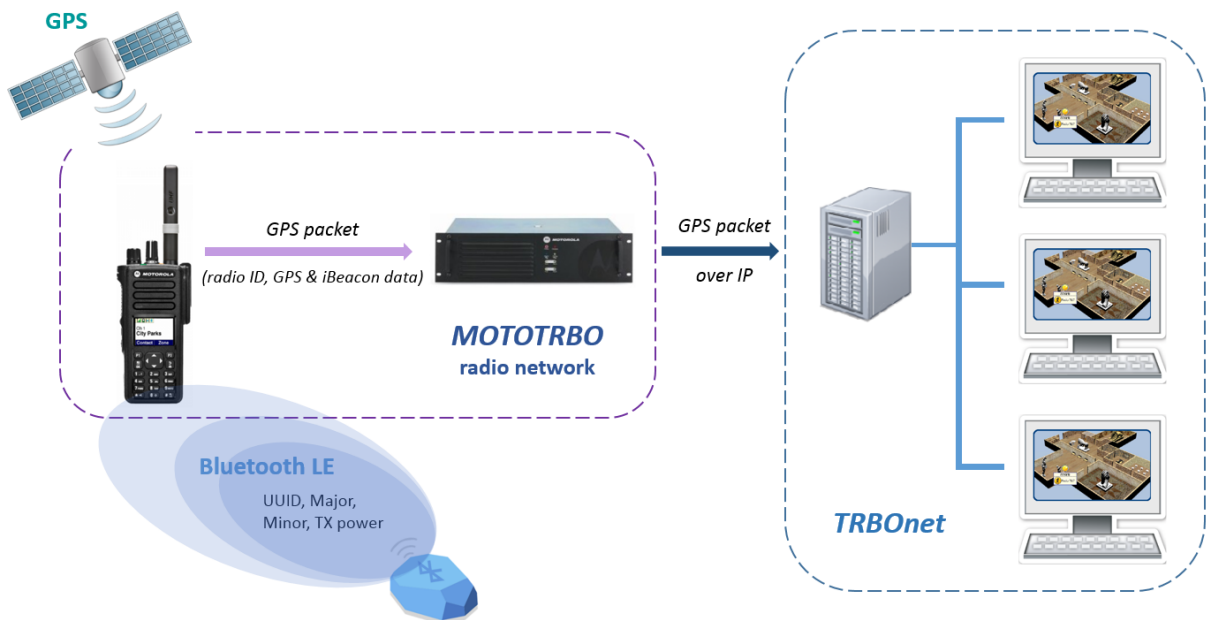


Figure 1: A Bluetooth-based Indoor Positioning solution

Beacons are installed in particular zones of the monitored area. Each beacon is assigned a set of identifiers and configured to broadcast this information to the range of up to 100 meters with regular time interval.

A broadcasted package consists of the following pieces of information:

- UUID: A 16-byte identifier used to differentiate a large group of related beacons.
- Major: A 2-byte identifier used to distinguish a smaller subset of beacons within a larger group.
- Minor: A 2-byte identifier used to identify individual beacons.
- TX Power: A hardcoded signal strength that is measured at one meter from a device. Devices use this value to determine their proximity to the beacon.

A MOTOTRBO two-way radio can be set up to hear beacons whose UUID are registered in the radio's configuration. At any moment, a radio can detect several beacons in close proximity. Information about the closest beacon is transmitted to TRBOnet on the radio channel.

The frequency of sending location data to the server and the package contents are configured on a per-radio basis. According to this configuration, a radio creates a package to transmit GPS data only, iBeacon data only, or both. Packages can be transmitted at regular time intervals and/or every time a radio enters an emergency mode of operation.

A Dispatch Console operator can see the real-time location of a radio on the floor map. TRBOnet can store location information, include it in predefined reports and provide them for retrospective analysis.

## 2.4. Features

With TRBOnet Indoor Positioning, a MOTOTRBO network system gains a new instrument to reduce industrial risks, make indoor activities safer, and make activities of Dispatch Console operators and emergency services more efficient and more productive. The new network system capabilities include:

- Indoor positioning on emergency

When a radio feeds location data on entering the emergency mode, a Dispatch Console operator immediately sees the radio with alarm indication on the screen and reacts accordingly. Indoor positioning on emergency can be a recommended strategy where capacity of the radio channel is limited, there is a large number of radios in the network, and continuous location tracking is not a crucial requirement.

- Combined indoor and outdoor positioning

Outdoor (GPS) and indoor positioning can be both activated on a radio to supplement each other, particularly, in GPS-only and beacon-only coverage zones. Combined positioning can be extremely useful when ongoing location tracking is required for activities running both indoors and outdoors.

- Real-time indoor positioning

When a radio feeds location data at a regular time interval, a Dispatch Console operator tracks the radio's location on the floor map in real time. This strategy is efficient when the channel capacity is sufficient for frequent transmissions, and when continuous location tracking of a radio is vitally important. For best results, real-time indoor location can be combined with indoor location on emergency.

- 2D and 3D visualization of subscribers' locations

TRBOnet supports 2D and 3D floor maps on which physical beacons can be placed. When a radio feeds location data, a Dispatch Console operator can immediately see the closest beacon highlighted on the map and the radio and beacon names.

- Guard Tour

Guard Tour (a TRBOnet feature) can employ indoor positioning as an underlying service. In this configuration, indoor beacons serve as checkpoints on the patrolled area, and indoor positioning settings on a guard's radio define the list of beacons to be heard and conditions for location data to be transmitted. During a guard tour, a Dispatch Console operator monitors the progress on the floor map and in the **Active Routes** pane in real time.

- Reporting

TRBOnet supplies predefined reports **Visited Beacons** and **Beacon History** with advanced filtering capabilities to facilitate creation of well-structured location tracking documents with no effort.

- Show Route

A radio's location history can be presented on the floor map as a route where location points (beacons) are connected with a line. Alternatively, TRBOnet can show a history of location events (beacon detected, beacon lost) and visualization of each step on the floor map.

## 2.5. Hardware and Software Requirements

Table 1: TRBOnet Bluetooth-based Indoor Positioning - hardware and software requirements

Hardware/software	Requirements
TRBOnet software	<ul style="list-style-type: none"> <li>Version 5.0 and higher</li> <li>A license with the Indoor Positioning option</li> </ul>
Two-way radio	<ul style="list-style-type: none"> <li>MOTOTRBO Enhanced Portfolio (production: April 2016 and later)</li> <li>Bluetooth 4.x (Low Energy) supported</li> <li>Indoor Location Tracking license (MOTOROLA)</li> </ul>
Hardware transmitter	<ul style="list-style-type: none"> <li>iBeacon technology</li> <li>Vendor: any. Find more information in <a href="#">Recommendations on iBeacon Transmitters</a>.</li> </ul>

## 2.6. Recommendations on iBeacon Transmitters

The Bluetooth LE infrastructure can be built on iBeacon transmitters of any preferred vendor. Estimote beacons ([estimote.com](http://estimote.com)) can be a recommended choice.

The typical characteristics of iBeacon transmitters are:

- Battery life: 2 years and more. Use the fleet management system provided by the iBeacon manufacturer for monitoring the remaining battery life.
- Signal range: up to 70 meters (230 feet)

## 2.7. Abbreviations

This section lists all abbreviations used in this document.

Table 2: Abbreviations

Term	Description
2D	Two-dimensional
3D	Three-dimensional
BMAP	Block Map (file format)



<b>Term</b>	<b>Description</b>
BMP	Bitmap Picture (file format)
CPS	Customer Programming Software
CSBK	Control Signaling Block
EID	Entitlement ID
GPS	Global Positioning System
ID	Identifier
JPEG	Joint Photographic Experts Group (file format)
LRRP	Location Request and Response Protocol
PNG	Portable Network Graphics (file format)
RSSI	Received Signal Strength Indicator
TIF	Tagged Image File (file format)
TX	Transmission
UDP	User Datagram Protocol
UUID	Universally Unique Identifier

## 3. Configuration

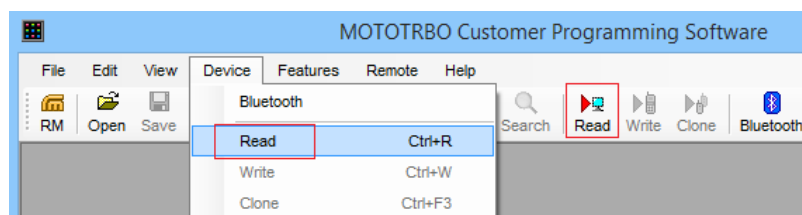
This section describes how to configure TRBOnet software and MOTOTRBO radios for using TRBOnet Indoor Positioning.

### 3.1. Radio Configuration

To prepare a MOTOTRBO two-way radio for Bluetooth-based Indoor Positioning, activate the Indoor Location Tracking license and modify the radio's configuration as described below. You can do it in MOTOTRBO CPS or in the Radio Management software.

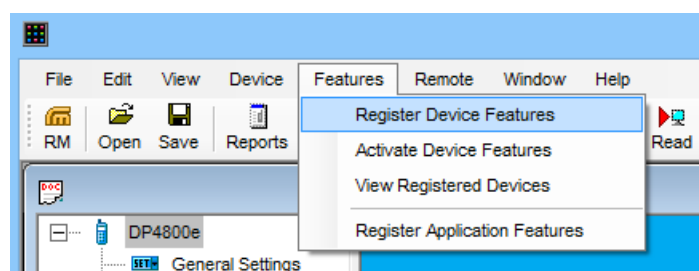
**To configure a MOTOTRBO radio for Bluetooth-based Indoor Positioning:**

1. Power off the radio and connect it to the computer. Power the connected radio.
2. Launch the MOTOTRBO CPS application on the computer.
3. Open the configuration of your radio in MOTOTRBO CPS by clicking the **Read** toolbar button, or by selecting **Device** and then **Read** in the application menu.



**Figure 2: Opening the configuration of the connected radio in MOTOTRBO CPS**

4. Register and activate the Indoor Location Tracking feature on your radio.
  - a. To register the purchased feature, select **Features** and **Register Device Features** in the menu.



**Figure 3: Registering the purchased feature on the radio**

In the wizard, enter the EID and click **Next**. Select the Indoor Location Tracking feature from the list and click **Next**. Enter the serial number of your radio and click **Register**.

Note: To obtain the EID, contact your dealer or a MOTOROLA sales representative.

- b. To activate the registered feature on your radio, select **Features** and **Activate Device Features** in the menu. In the wizard, click **Next** and again **Next**. Select the Indoor Location Tracking feature for the registered radio and click **Activate**.
5. In the left pane, select **Network**. In the right panel, click **Bluetooth** and select the **Enable** checkbox to enable the Bluetooth feature on the radio.

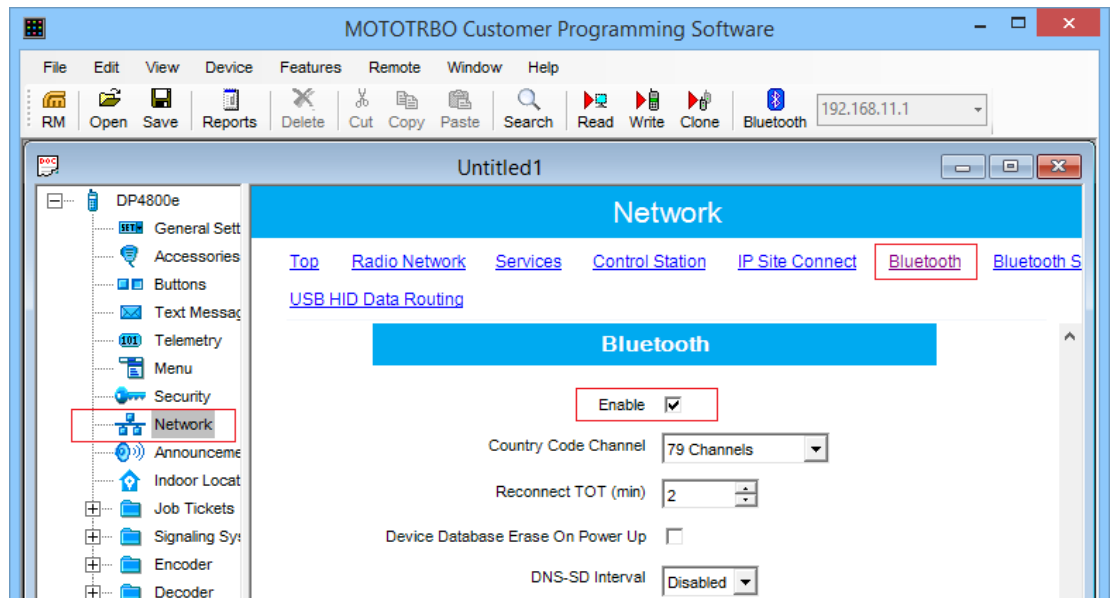


Figure 4: Enabling the Bluetooth feature on the radio

6. In the left pane, select **Indoor Location**. In the right panel, select the **Indoor Location** checkbox to enable the respective feature on the radio.

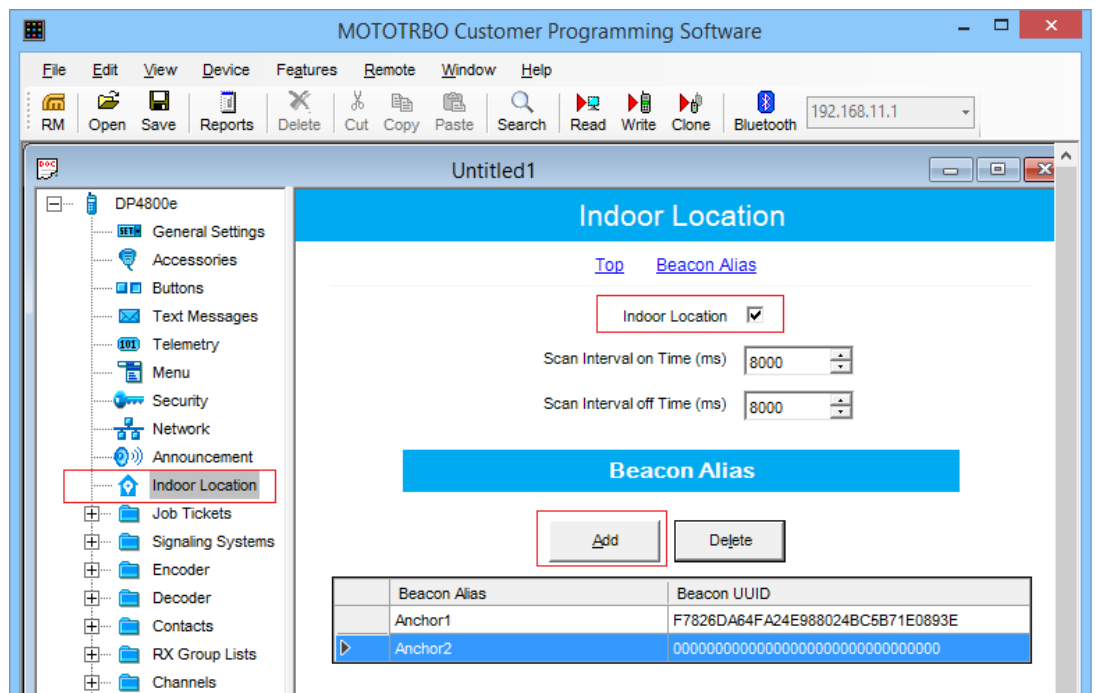
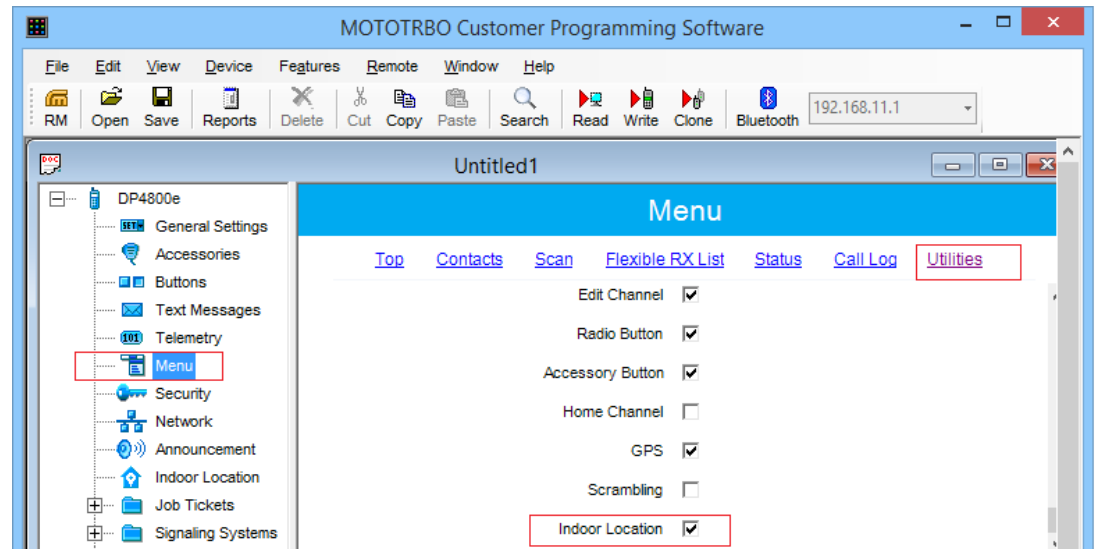


Figure 5: Enabling the Indoor Location feature and adding beacons

The **Add** and **Delete** buttons in the **Beacon Alias** section become available. The table shows all beacons registered on the radio.

7. To add a new iBeacon, click the **Add** button. In the line added at the bottom of the table, double-click the default text and type the preferred beacon alias and the UUID value.
8. In the left pane, select **Menu**. In the right pane, select **Utilities** and select the **Indoor Location** checkbox to activate the Indoor Location menu on the radio.



**Figure 6: Activating the Indoor Location menu item on the radio**

9. Click the **Write** toolbar button or select **Device** and **Write** in the application menu to load the updated configuration to the radio.
10. Power off the radio and disconnect it from the computer.

### Radio Configuration Test



**Figure 7: Detected beacons**

**To ensure that the updated configuration works properly:**

1. Power the radio and bring it close to any physical beacon registered on the radio.
2. In the **Main Menu** of the radio, select **Bluetooth**. In this menu section:
  - a. Go to **My Status** and select **On** to activate Bluetooth on the radio.
  - b. Go to **Indoor Location** and select **Enabled**. Then select **Beacons**.

All detected beacons appear on the display, each with the UUID and Major and Minor identifiers.

## 3.2. Server Configuration

This section describes how to configure Indoor Positioning in TRBOnet Server.

**Table 3: High-level steps for configuring Indoor Positioning on TRBOnet Server**

#	High-level steps	Refer to
1	Launch TRBOnet Server by clicking the shortcut on the Windows desktop.	
2	Apply a license with Indoor Positioning support.	<a href="#">Applying a License with Indoor Positioning Support</a>
3	Verify the status of the GPS Location service.	<a href="#">Verifying the GPS Location Service</a>

After the server-side configuration is finished, you need to specify several settings in the Dispatch Console as described in section [TRBOnet Dispatch Console Configuration](#) of this guide.

### 3.2.1. Applying a License with Indoor Positioning Support

TRBOnet Indoor Positioning requires a TRBOnet license with the Indoor Positioning option.

#### To check if your license supports Indoor Positioning:

1. In Dispatch Console, click the **Administration** tab in the left pane.
2. In the **Administration** pane, select **License** from the tree.
3. In the right pane, find **Indoor Positioning** under the **List of available features**.

If this option is not included, contact your sales representative to obtain a license with Indoor Positioning support.

#### To apply a new license:

1. Copy the new license file to a local folder. If this folder contains other license files, delete them.
2. Launch TRBOnet Server. In the configuration window, select **License** in the left pane.
3. Click the **License Manager** link in the right pane.
4. In the **License Manager** window, follow the instructions and select the new license file from the local folder.

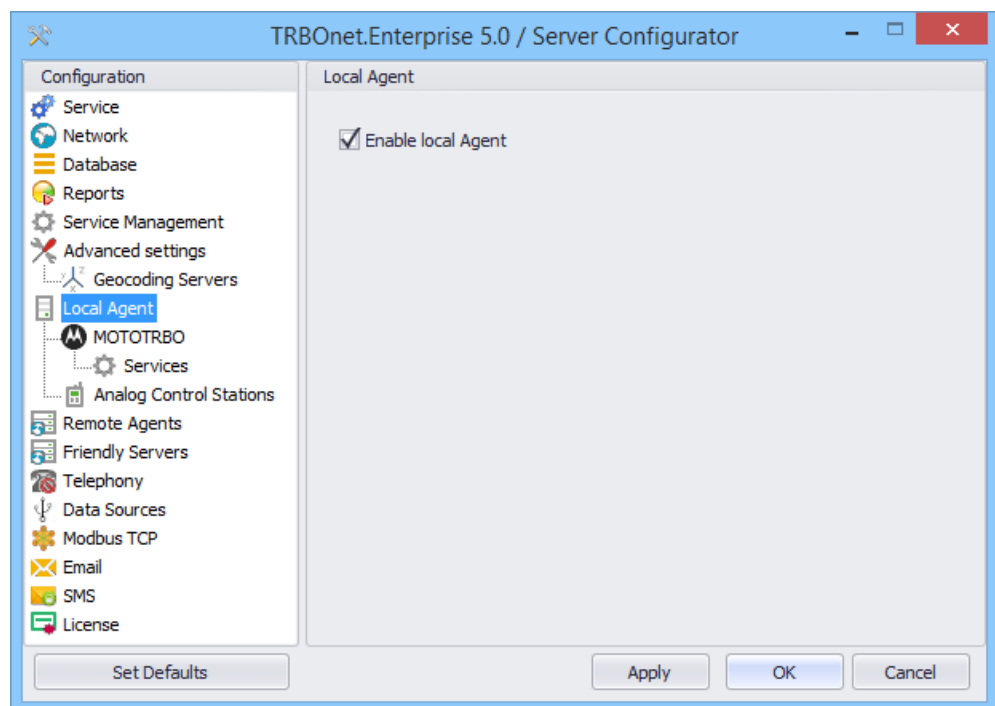
5. Click **Finish** to close the wizard.
6. Click **Apply** and confirm restart of TRBOnet Server.

### 3.2.2. Verifying the GPS Location Service

TRBOnet Indoor Positioning requires the GPS Location service to be enabled.

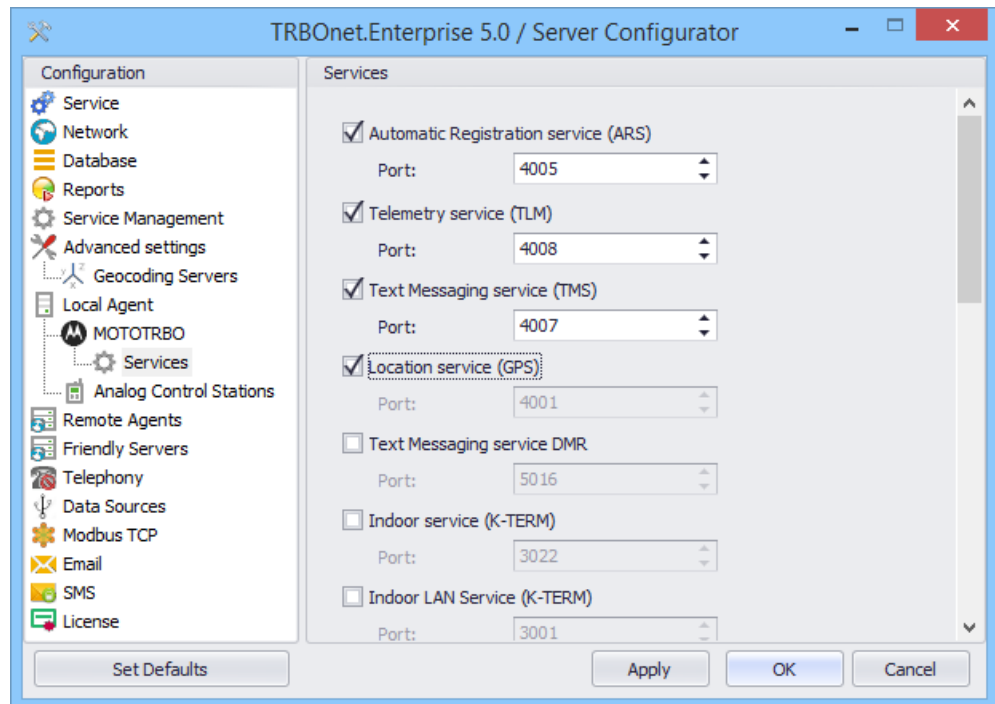
#### To verify the status of the GPS Location service:

1. Launch TRBOnet Server.
2. In the configuration window, select **Local Agent** in the left pane. The **Enable local Agent** option must be selected.



**Figure 8: The local agent is enabled**

3. In the left pane, select **Services** under **Local Agent** and **MOTOTRBO**. In the right pane, the **Location service (GPS)** option must be selected.



**Figure 9: The GPS Location service is enabled**

4. Exit the window.

### 3.3. Dispatch Console Configuration

This section describes how to configure Bluetooth-based Indoor Positioning in TRBOnet Dispatch Console.

**Table 4: High-level steps for enabling iBeacon-based indoor positioning in TRBOnet Dispatch Console**

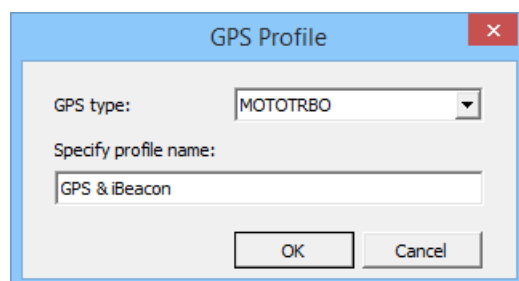
#	High-level steps	Refer to:
1	Launch Dispatch Console by clicking the shortcut on the Windows desktop.	
2	Create GPS profiles.	<a href="#">Creating a GPS Profile</a>
3	Assign a GPS profile to each radio.	<a href="#">Assigning a GPS Profile to Radios</a>
4	Prepare a floor map.	<a href="#">Preparing a Floor Map</a>
5	Place beacons on the floor map.	<a href="#">Placing Beacons on a Map</a>

#### 3.3.1. Creating a GPS Profile

A GPS profile defines the rules for sending GPS and/or iBeacon information from a radio to TRBOnet Server. You need at least one GPS profile with iBeacon support.

**To create a GPS profile:**

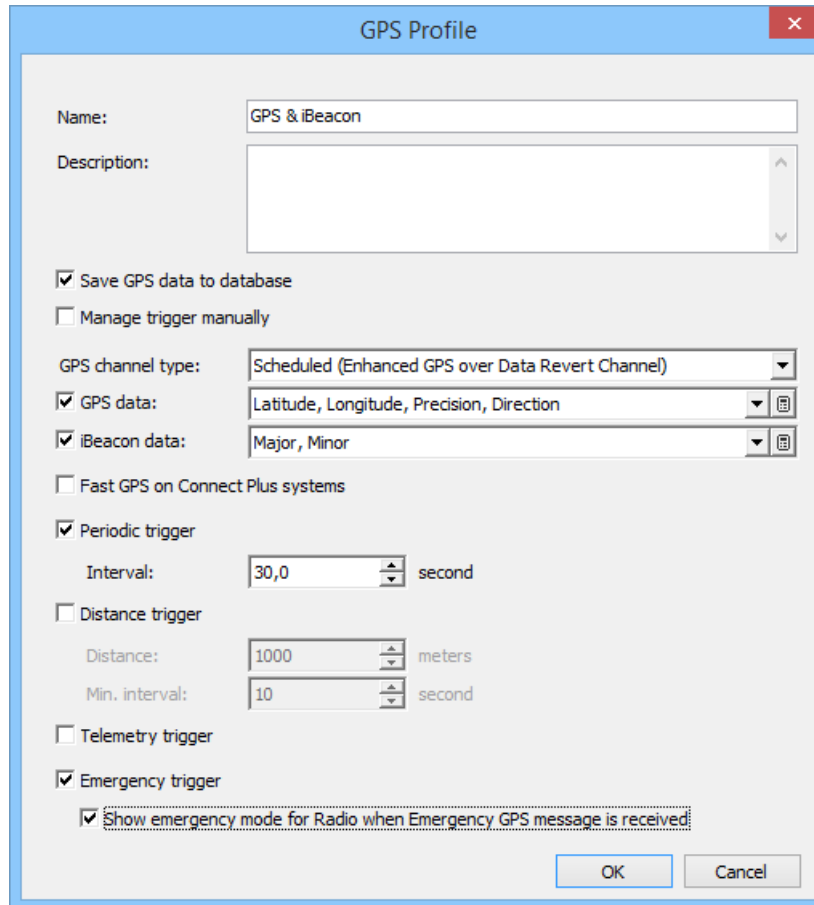
1. In Dispatch Console, click the **Administration** tab in the left pane.
2. In the **Administration** pane, select **GPS Profile** in the tree.
3. To add a profile, click **Add** in the right pane. In the **GPS Profile** dialog box, select **MOTOTRBO** in the **GPS type** menu. Specify the profile name and click **OK**.



**Figure 10: Creating a GPS profile**

4. In the **GPS Profile** dialog box, modify the default GPS profile settings where needed.





**Figure 11: GPS profile settings**

The following settings are important for sending iBeacon data:

- **GPS Channel type:** In the menu, select a radio channel for sending location data to TRBOnet Server:
  - **Non-scheduled (Regular GPS over Voice or Data Revert Channel)**
  - **Scheduled (Enhanced GPS over Data Revert Channel)**

**WARNING:** Because of the LRRP protocol limitations, CSBK options should not be selected for iBeacon data transfer. Option **Fast GPS on Connect Plus systems** should not be selected for the same reason.

- **iBeacon data:** Check the box to enable sending iBeacon data to TRBOnet Server. In the menu, select iBeacon data to be included in a packet:
  - **Major, Minor** (always included)
  - **UUID**
  - **TX Power, RSSI**

- **Periodic trigger:** Check this box to set a periodic GPS trigger on a radio. The trigger initiates the radio to send GPS and/or iBeacon data at the specified time interval.
  - **Interval:** Specify the time interval (in seconds) for the periodic trigger.
  - **Emergency trigger:** Check this box for a radio to send GPS and/or iBeacon data when entering the emergency mode. Optionally, select the **Show emergency mode ...** option if you want a Dispatch Console operator to see the emergency status of a radio that transmitted location data.
5. If you have selected the **Scheduled** option for **GPS channel type**, click the “calculator” icon next to the **GPS data** field or **iBeacon data** field.

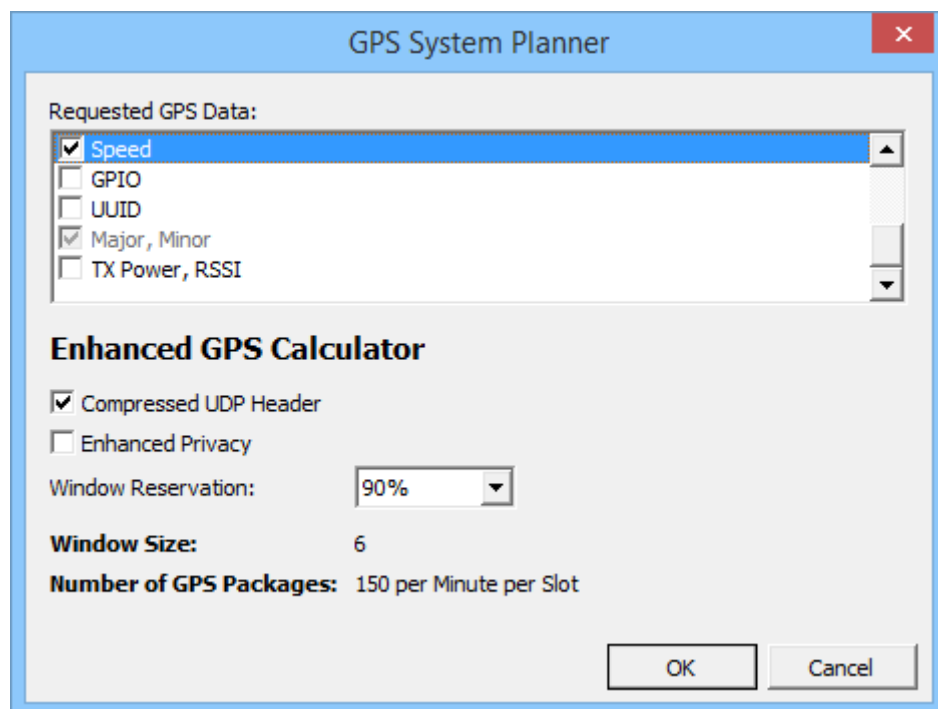


Figure 12: Calculating the window size for GPS data transfer

In the **GPS System Planner** window, specify GPS and iBeacon data to be included in a package. The actual window size and the capacity of the Enhanced GPS Revert channel are recalculated as you change the package attributes.

**WARNING:** To prevent unexpected results of sending location data, make sure that all repeaters and subscribers in the system with Enhanced GPS feature are configured to use the same window size. To learn more about configuring Enhanced GPS in different system topologies, refer to MOTOTRBO System Planner.

6. Click **OK**. The newly created GPS profile appears under the **GPS Profile** section in the left pane.

### 3.3.2. Assigning a GPS Profile to Radios

Assign a GPS profile with iBeacon support to each radio that should send iBeacon information to TRBOnet Server.

#### To assign a GPS profile to a radio:

1. In Dispatch Console, click the **Administration** tab in the left pane.
2. In the **Administration** pane, select **Radios** from the tree.
3. Select a desired radio in the list and click **Edit** in the right pane.
4. In the dialog box, select the **General** tab. If advanced settings are collapsed, click **Show Advanced Settings**.
5. In the **Location Service** section, expand the **GPS Profile** drop-down list and select the preferred profile with iBeacon support.

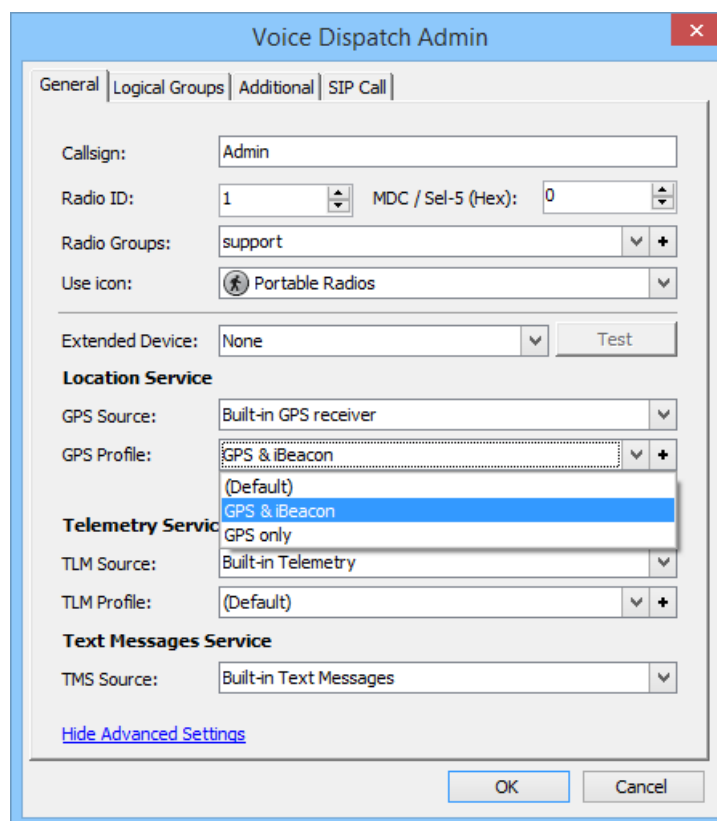


Figure 13: Updating a radio profile

Note: Alternatively, click the “plus” button next to the **GPS Profile** box and create a new GPS profile as described in [Creating a GPS Profile](#). When you click OK, a just created GPS profile is assigned to the radio and appears in the **GPS Profile** box.

6. Select option **GPS Enabled**. This option enables TRBOnet Server to send GPS triggers to a radio.
7. Click **OK**.

### 3.3.3. Preparing a Floor Map

TRBOnet Dispatch Console supports 2D and 3D floor maps to let you visualize the location of each beacon on the monitored territory.

- A 2D map is a BMAP file that you can generate from an image file in TRBOnet Dispatch Console.
- A 3D map is an X (DirectX) file that you can create using third-party software.

#### To create a 2D map:

1. Place an image file with a floor map in a local folder. Dispatch Console can work with many image formats, including JPEG, PNG, TIF, and BMP.
2. In Dispatch Console, click the **Administration** tab in the left pane.
3. In the **Administration** pane, expand **Tools** and select **Indoor 2D Map Converter** in the tree.
4. In the right pane, specify the following parameters:
  - **Name:** The preferred name of the map.
  - **Image:** The full path of the source image file.
  - **Directory:** The full path of the folder where the generated map is located.
5. Click **Start**.

### 3.3.4. Placing Beacons on a Map

Open a floor map in TRBOnet Dispatch Console and indicate the location of each beacon on the map.

#### To open a floor map:

1. In TRBOnet Dispatch Console, click the **GPS Positioning** tab in the left pane.
2. In the application menu, select **Map** and **Open New Map in Tab...** to open a floor map in the right pane. Or, select **Open New Map in Window...** to open a floor map in a separate window,
3. In the **Select Map** dialog box, specify the following parameters:
  - **Map Type:** Select **Beacon 2D** or **Beacon 3D**, depending on the type of your floor map.
  - **Caption:** Specify the name of your floor map to be displayed in the tab header.
  - **Available Maps:** Select the preferred map to activate the **OK** button. Click **OK**.

Note: If you cannot find your map in the list, click **Add** and select the image file of the preferred map in the system dialog box. The selected map appears in the list.

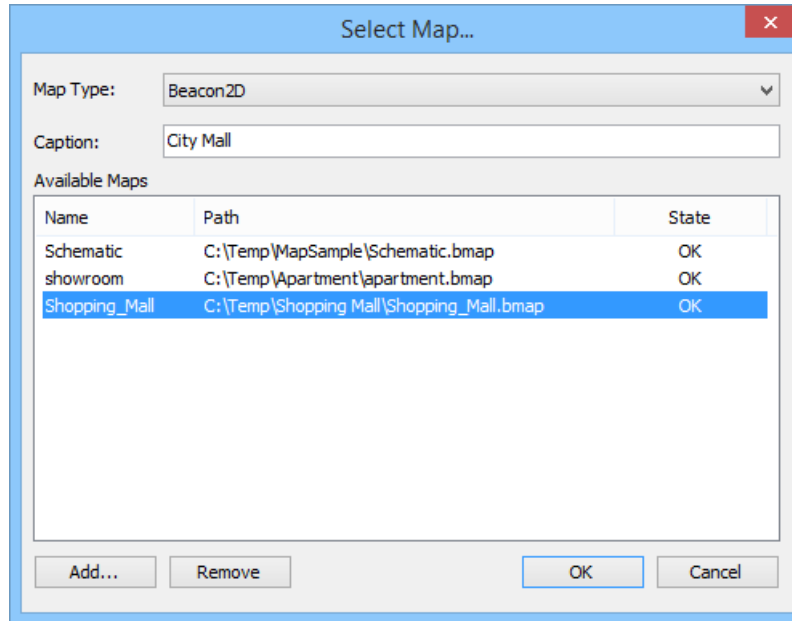


Figure 14: Selecting a floor map

4. Click **OK**. A new tab with the selected floor map appears in the right pane.

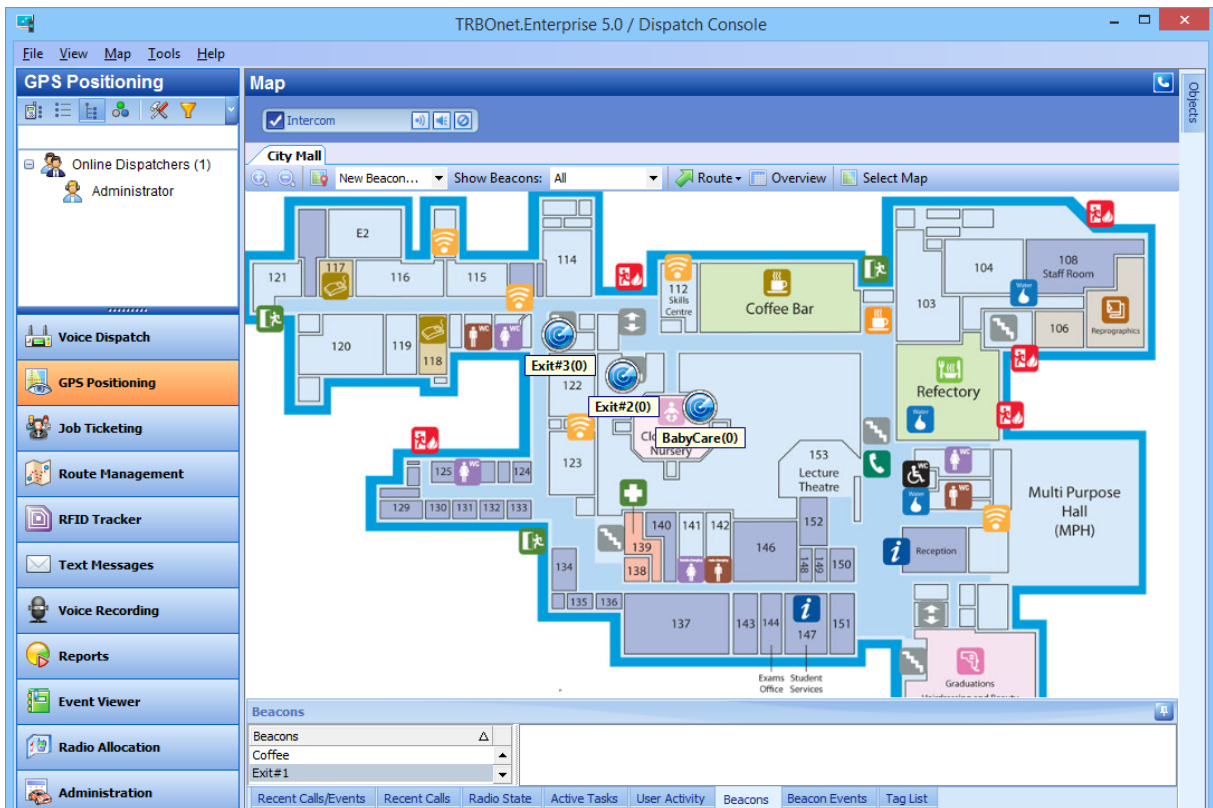



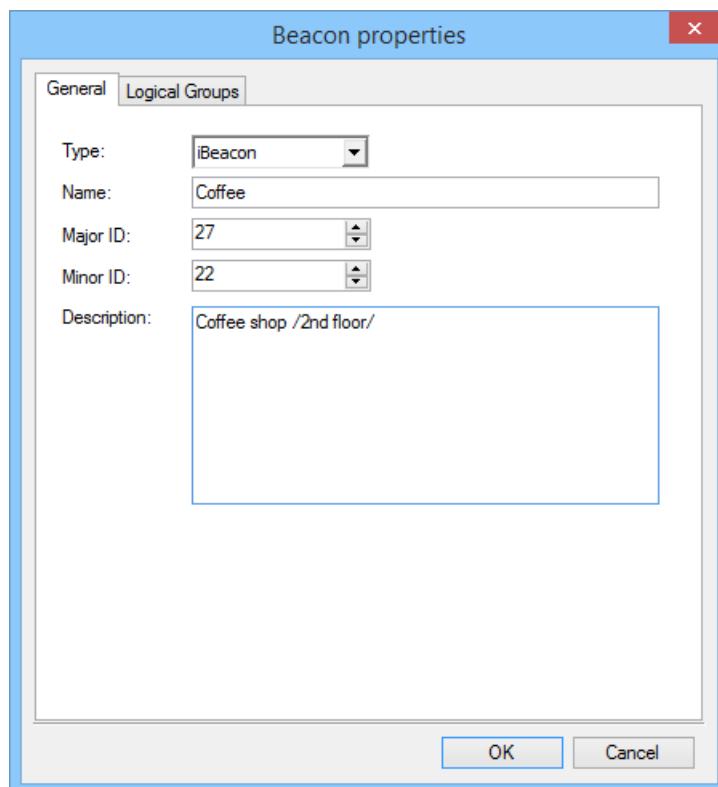
Figure 15: 2D floor map

You can adjust the view of your map as follows:

- To zoom in/out your map, scroll the mouse wheel.
- To pan a 2D map, click the map area and move the mouse cursor, keeping the primary mouse button pressed.
- To pan a 3D map, click the map area and move the mouse cursor, keeping the secondary mouse button pressed.
- To rotate a 3D map, click the map area and move the mouse cursor, keeping the primary mouse button pressed.
- To display the map with its original size and position, click the **Overview** button in the control bar.

#### To place beacons on a map:

1. In the right pane, select the tab with the preferred floor map.
2. To add a new beacon to the map, expand the list of beacons on the toolbar and select **New Beacon....** To place an existing beacon, click it in the list.
3. Click the  (**Set Location**) button. The shape of the mouse cursor changes.
4. Click on the map to point the location of a physical beacon on the floor.
5. (Optional) If you add a new beacon, the **Beacon properties** window appears.



The screenshot shows a 'Beacon properties' dialog box with the following fields:

- Type:** iBeacon (dropdown menu)
- Name:** Coffee (text input)
- Major ID:** 27 (spin box)
- Minor ID:** 22 (spin box)
- Description:** Coffee shop /2nd floor/ (text area)

Buttons: OK, Cancel

**Figure 16: Specifying beacon properties**

- a. Select iBeacon in the **Type** menu.
- b. Specify any descriptive name to identify the beacon.

- c. Enter the beacon's major and minor ID exactly as specified on the iBeacon device.
- d. Click **OK**. A new beacon with the specified name appears on the map.

You can edit beacons on the map as follows:

- To relocate a beacon on the map, right-click it and select **Set Location** in the context menu. Then point the desired location on the map.
- To edit properties of a beacon, double-click that beacon on the map or in the **Beacons** pane. Modify the properties in the **Beacon properties** window and click **OK**.
- To delete a beacon from the map, right-click it and select **Delete from the Map** in the context menu.

Note: The deleted beacon is not linked to a map but is still displayed in the **Beacons** pane.

- To completely remove a beacon, right-click it in the **Objects** pane and select **Remove Object** in the context menu.

### 3.4. Test

Power on your radio configured for Bluetooth-based Indoor Positioning. Launch TRBOnet Dispatch Console and select **GPS Positioning** in the navigation pane.

If all configuration settings are correct, the following happens:

1. In a few minutes, TRBOnet identifies the radio in the network and displays its status as Radio Online. This happens automatically, no action on the radio is required.

Note: The identification time is three times the [periodic trigger interval](#) specified in the GPS profile assigned to the radio.

2. TRBOnet sends the GPS Start request to the radio.
3. The radio starts to report its own location - GPS data, or iBeacon data, or both - as specified in the linked GPS profile.
4. On the floor map, the closest beacon detected by the radio is displayed in the yellow color, indicating the radio's location. The value in brackets indicates the number of radios currently located by the yellow beacon. Beacons displayed in the blue color do not locate any radios.



Figure 17: A radio detects the closest beacon on a 3D map